

# Amy's babies

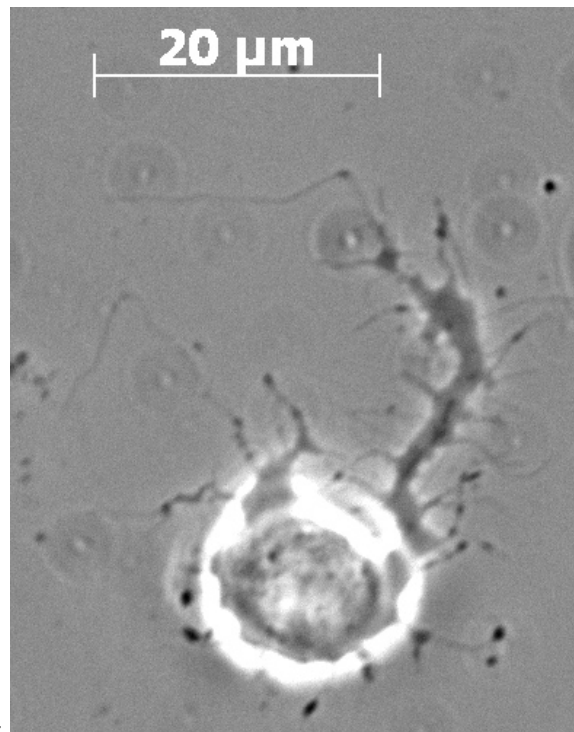
## Websites that I like:

<http://www.youramazingbrain.org/>

<http://labs.ideeinc.com/multicolr/>

<http://www.bbc.co.uk/science/humanbody/>

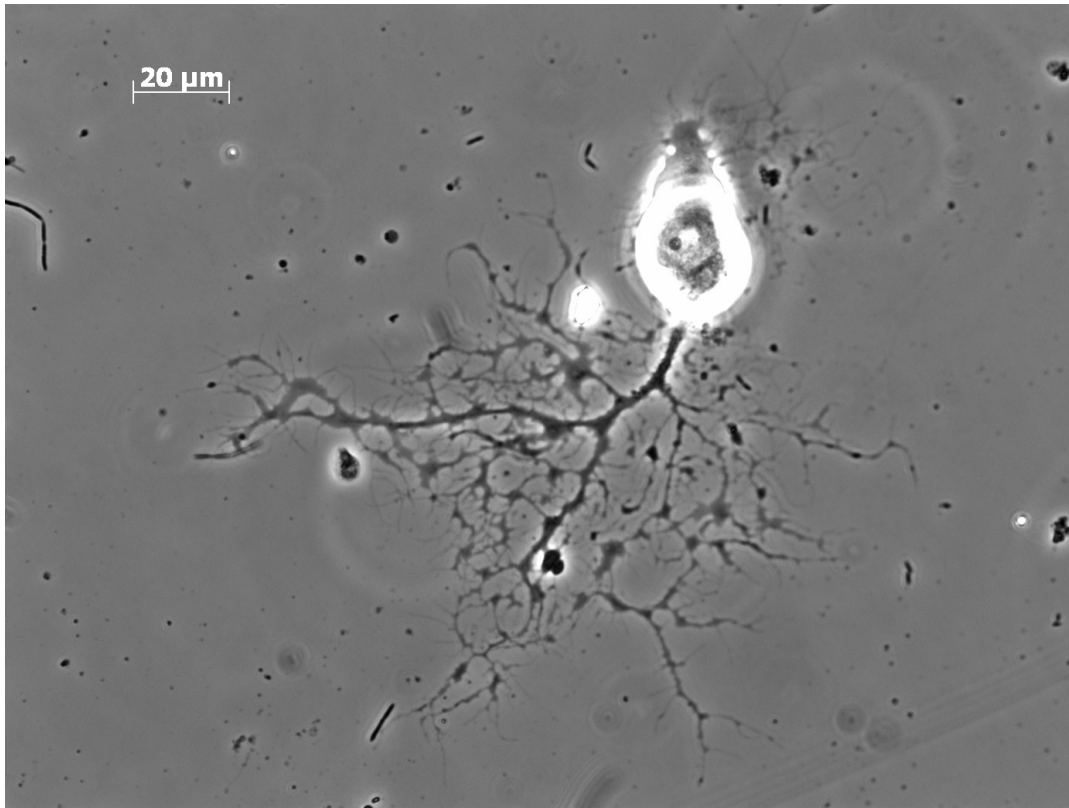
## Cells that I like:



The first cell I ever grew in the Tilden Lab:

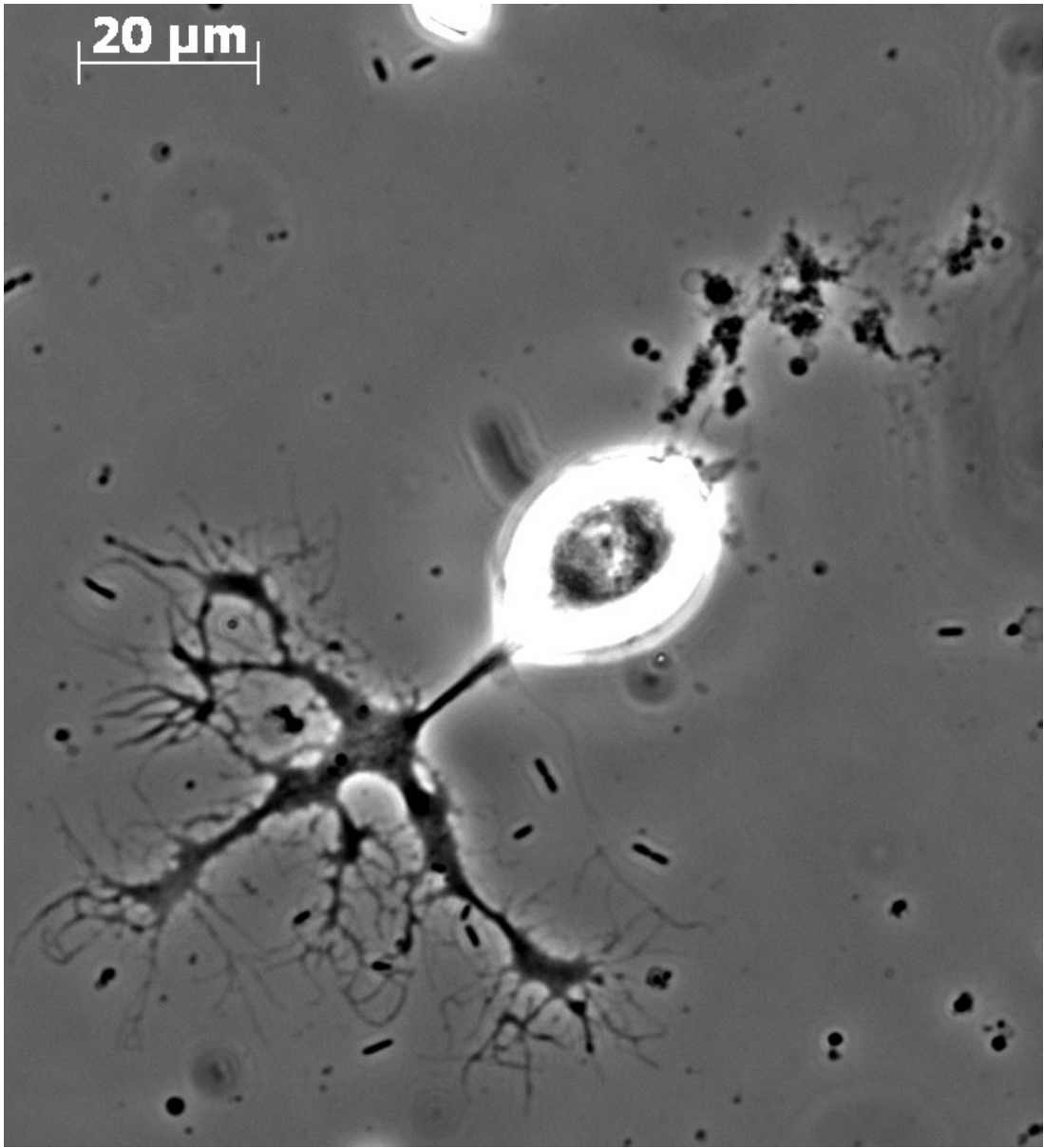
## I grew these myself...

The first one is a picture of a cell treated with a solution Ginkgo Biloba Extract:

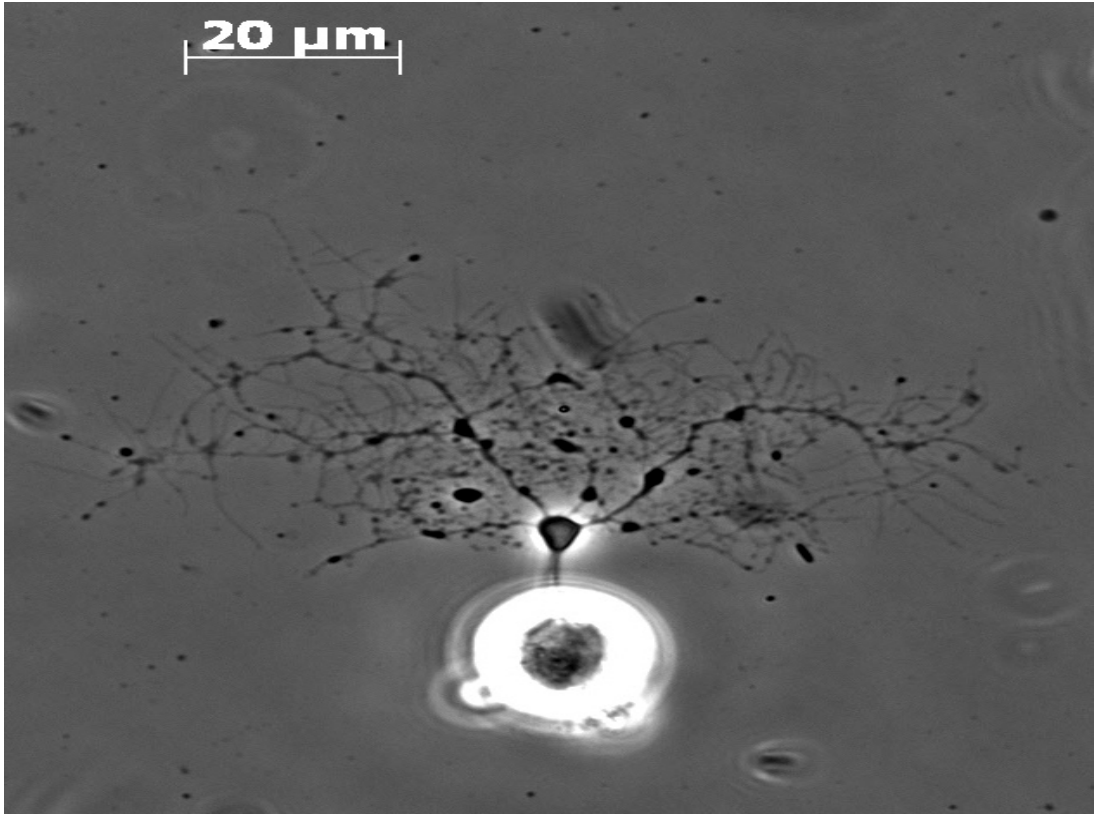


□

This next one is a picture of a cell treated with 98% DEET insect repellent:



And this is a cell that I think looks like a tree!



Now here are some cells that I did NOT grow by myself, but aren't they just gorgeous?

