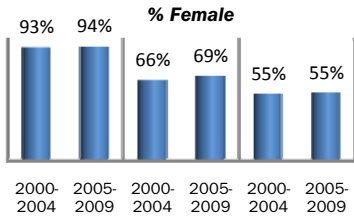
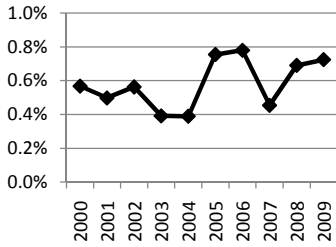
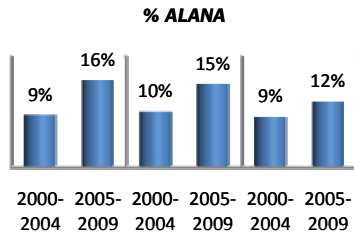


1. Enrollment report for Education and Human Development Major (Ind)

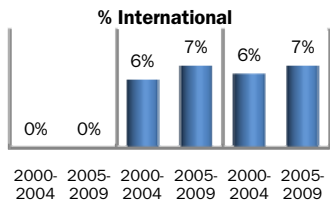
Declared majors in Education and Human Development Major (Ind) as a % of all declared majors



Your Dept Your Division All-Colby
5-year average



Your Dept Your Division All-Colby
5-year average



Your Dept Your Division All-Colby
5-year average

DECLARED MAJORS

Count of majors in Education and Human Development Major (Ind) declared as of October 1 census

Fall Census Year	2000	2001	2002	2003	2004	2005	2006	2007	2008	2009
Human Development	10	9	10	7	7	14	15	9	13	13
Grand Total	10	9	10	7	7	14	15	9	13	13

Count of minors in Education and Human Development Program declared as of October 1 census

Fall Census Year	2000	2001	2002	2003	2004	2005	2006	2007	2008	2009
Education	61	61	70	55	50	41	46	40	53	59
Education: Professional Certification	16	30	26	20	18	19	19	19	20	10
Environmental Education					2	2	6	5	9	7
Human Development	16	19	18	17	10	10	14	21	19	18
Grand Total	93	110	114	92	80	72	85	85	101	94

MAJORS AND MINORS AT GRADUATION

Count of graduates completing majors in Education and Human Development Major (Ind)

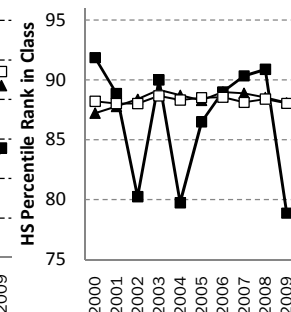
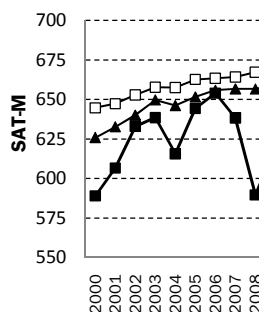
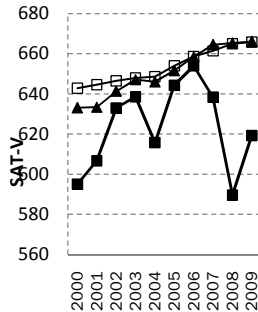
Year of Graduation	2000	2001	2002	2003	2004	2005	2006	2007	2008	2009
Human Development	10	5	4	5	6	2	6	11	4	6
Grand Total	10	5	4	5	6	2	6	11	4	6

Count of graduates completing minors in Education and Human Development Program

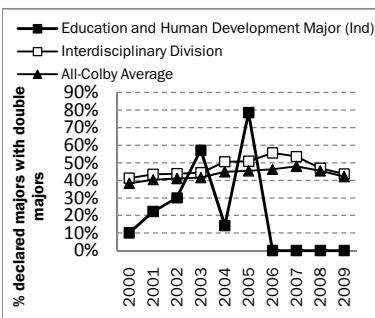
Year of Graduation	2000	2001	2002	2003	2004	2005	2006	2007	2008	2009
Education	18	17	12	12	12	5	8	11	15	3
Education: Professional Certification	7	1	3	6	8	9	5	5	3	8
Environmental Education	0	0	0	0	0	0	0	2	1	3
Human Development	5	4	2	1	8	4	3	4	6	8

ACADEMIC APTITUDE OF DECLARED MAJORS, AS ASSESSED AT ADMISSION

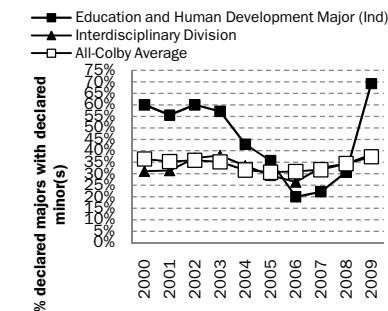
- Education and Human Development Major (Ind)
- ▲ Interdisciplinary Division
- All-Colby Average



Majors with double majors (declared as of 10/1)



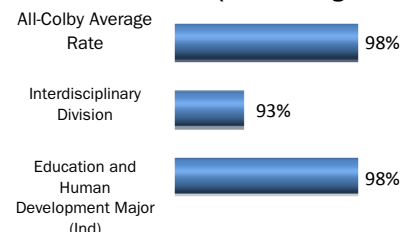
Majors with minor(s) (declared as of 10/1)



Estimate of major completion rate

Figures roughly represent the percent of those declaring a major by junior year who went on to complete that major

Graduates as a % of junior majors four semesters earlier (2005-2007 graduate)



2. Junior Survey Results

This instrument was administered for the first time in spring 2009 to juniors enrolled on campus. This resulted in a fairly low response rate, but the data is included to show the types of data being collected and hopefully to provide some interesting information for each department.

4 juniors with majors or minors in the Department of Education participated.

How important were each of the following in your decision to major? (1=not important, 2=somewhat important, 3=quite important, 4=very important)

	Education	Interdisciplinary	All Colby Average
The introductory course was interesting	2.75	2.56	2.63
Had course with great professor from department	2.75	2.61	2.88
Getting good grades in courses in department	2.25	1.83	2.24
Professor encouraged me to major or minor	1.00	1.72	1.75
Family recommended it	1.25	1.67	1.60
Friends recommended it	1.50	1.78	1.46
Wanted a field with right or wrong answers	1.00	1.22	1.46
Wanted an interdisciplinary field	2.50	2.83	2.05
It will lead to interesting careers	3.50	3.00	2.93
It will lead to lucrative careers	3.50	2.89	2.70
Interested in this field for a long time	2.75	2.00	1.92

How true have you found each of the following to be? (1=not at all true, 2=somewhat true, 3=very true)

Subject matter is exciting	2.50	2.67	2.57
Major/minor suits my skills and talents	2.75	2.33	2.48
Area includes faculty with whom I'd like to work	2.75	2.39	2.43
Questions in field have clear right and wrong answers	1.25	1.50	1.55
Field is interdisciplinary	2.25	2.72	2.17
Parents support my interest in this field	2.25	2.39	2.49
Offers exciting research, internship opportunities	2.75	2.44	2.33
Leads to work that helps people	3.00	2.67	2.32
Positions me well for a good job	2.75	2.11	2.20

How well do the following statements describe you (1=not at all, 2=somewhat, 3=very much)

Learned to think differently since I started studying in this major	3.00	2.50	2.40
I see connections between coursework for this major and coursework outside the major	2.75	2.56	2.38
I routinely notice situations in which this major's methods or findings apply	2.75	2.50	2.33
This major/minor is an important part of my personal identity	2.75	2.33	2.14

Percent who have done or plan to do research or an independent study in this field, either on- or off-campus	100.00	72.22	61.11
--	--------	-------	-------

3. Majors' self-reported gain scores: Department of Education

Survey items have been clustered in groups related to Colby precepts. Divisional and All-Colby averages that are in bold italics are significantly different than departmental averages ($p < .05$, two-tailed).

For item scores:

4 = "Enhanced skill greatly", 3 = "Enhanced skill moderately", 2 = "Enhanced skill a little", 1 = "Enhanced skill not at all"

28 students completed the survey between 2003 and 2009 and graduated with a major in Education	Average response for majors in:		
	Education	Interdisciplinary Division	All-Colby Average
SELF RELIANCE			
Function Independently	3.50	3.42	3.37
Establish Course of Action	3.38	3.23	3.17
Develop Self-Esteem	3.64	2.99	2.99
Work Under Pressure	3.36	3.51	3.43
Understand Myself	3.71	3.48	3.44
SOCIAL JUSTICE/ETHICAL REASONING			
Develop Awareness of Social Problems	3.69	3.16	3.09
Place Problems in Historical Perspective	3.15	3.25	3.08
Understand Moral and Ethical Issues	3.36	3.03	2.95
Relate to People of Different Races, Nations, or Religions	2.93	2.86	2.85
Engage in Pursuit of Knowledge and Truth	3.57	3.19	3.05
CRITICAL THINKING			
Think Analytically and Logically	3.43	3.55	3.55
Formulate Creative Ideas and Solutions	3.46	3.32	3.18
Acquire New Skills and Knowledge	3.57	3.51	3.48
Evaluate and Choose Alternatives	3.14	3.07	3.01
Write Effectively	3.50	3.60	3.37
Plan and Execute Projects	3.43	3.12	3.16
Gain In-Depth Knowledge of a Subject	3.71	3.63	3.55
SCIENTIFIC THINKING			
Understand Process of Science	2.50	2.20	2.52
Use Quantitative Tools	2.57	2.07	2.64
Use Technology	2.93	2.39	2.64
Evaluate Role of Science and Technology in	2.71	2.23	2.48
LEADERSHIP AND COMMUNICATION			
Lead and Supervise Groups	3.21	2.92	2.92
Communicate Well Orally	3.21	3.04	3.11
Function Effectively as Team Member	3.21	3.00	3.05
EXPRESSIVE SKILLS			
Read or Speak Foreign Language	2.86	2.94	2.55
Appreciate Art	3.00	3.27	2.75

4. Student Satisfaction with Major: Department of Education (2007, 2009 Graduates only)

A total of 14 Education spring 2007 and 2009 seniors provided data for department summary values

% of majors who were "very" satisfied with the major in terms of...	Interdisciplinary		
	Education	Division	All-Colby Average
Variety of course offerings	29%	29%	28%
Overall quality of course offerings	43%	42%	46%
Faculty-mentored independent research opportunities	58%	28%	37%
Intellectual challenge	36%	53%	58%
Faculty availability outside of class	86%	70%	68%
Sense of community among students and faculty	85%	48%	42%
Average Satisfaction (above six items)	54%	45%	46%
Would you choose this major again? ("Definitely")	50%	50%	55%

% of majors who were "very" or "generally" satisfied with the major in terms of...	Interdisciplinary		
	Education	Division	All-Colby Average
Variety of course offerings	100%	69%	80%
Overall quality of course offerings	93%	93%	94%
Faculty-mentored independent research opportunities	100%	54%	66%
Intellectual challenge	100%	95%	95%
Faculty availability outside of class	100%	96%	97%
Sense of community among students and faculty	85%	87%	84%
Average Satisfaction (previous six items)	92%	82%	86%
Would you choose this major again? ("Definitely" or "Probably")	86%	80%	78%